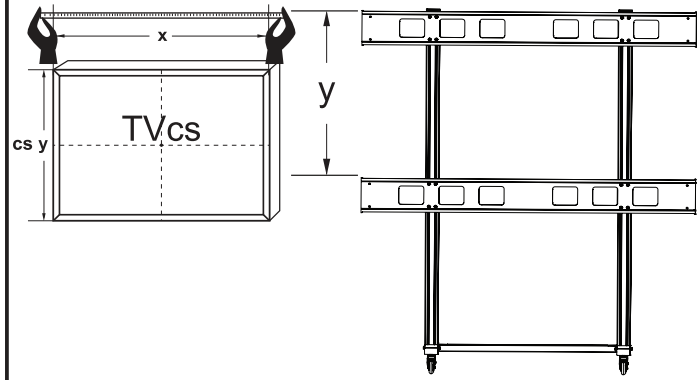
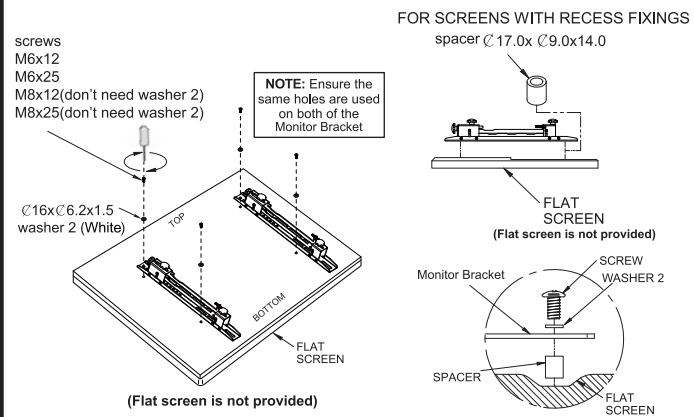


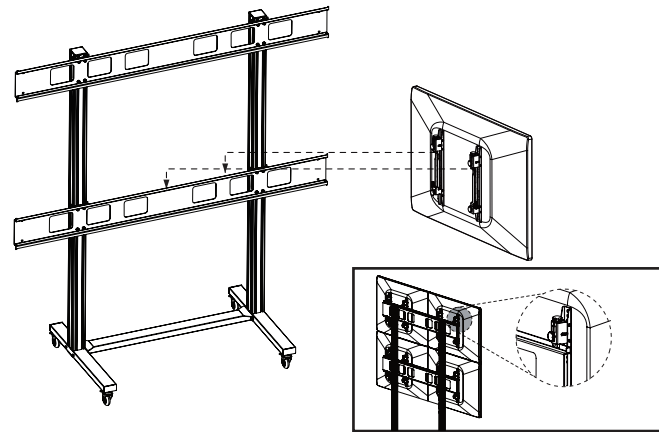
Step7 After two panels installed, according to the width of the TV to adjust the distance between the two panels, the distance between the two panels is equal to the width of the TV.



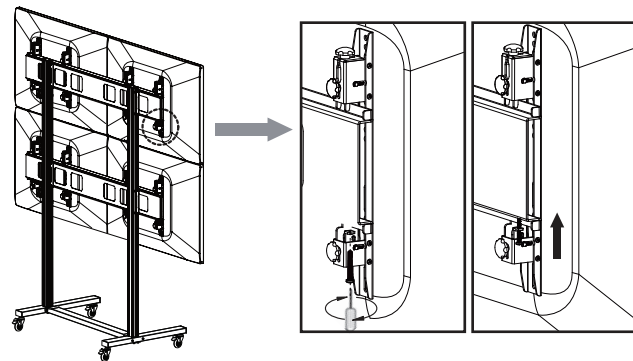
Step8 Attach the interface arms to the flat screen.



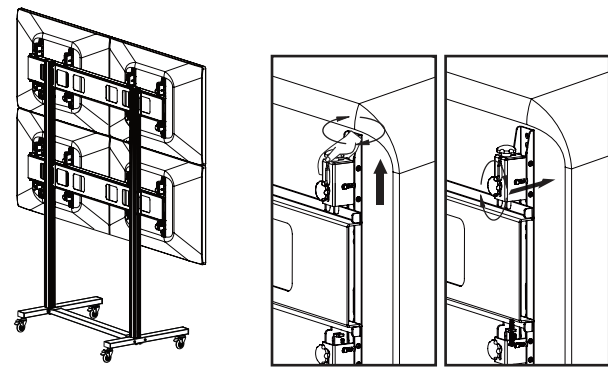
Step9 Hook the screen with interface arms onto the mount.



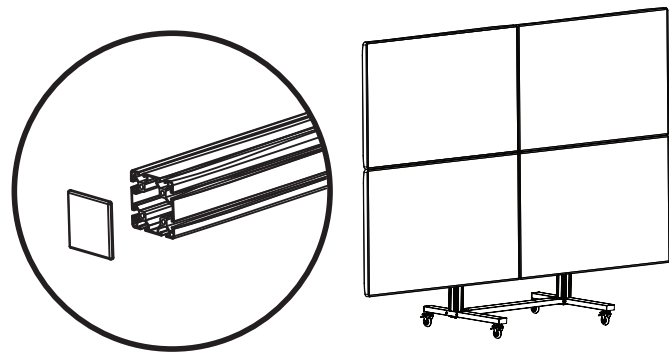
Step10 Secure the interface arms to the mount using



Step11 Each monitor bracket has independent front and back up and down adjustment function, the adjustment amplitude is 20mm.



Step12 Tighten the screws in various parts. Don't forget to put the end caps on, don't use too much strength so as to damage them.



INSTALLATION GUIDE

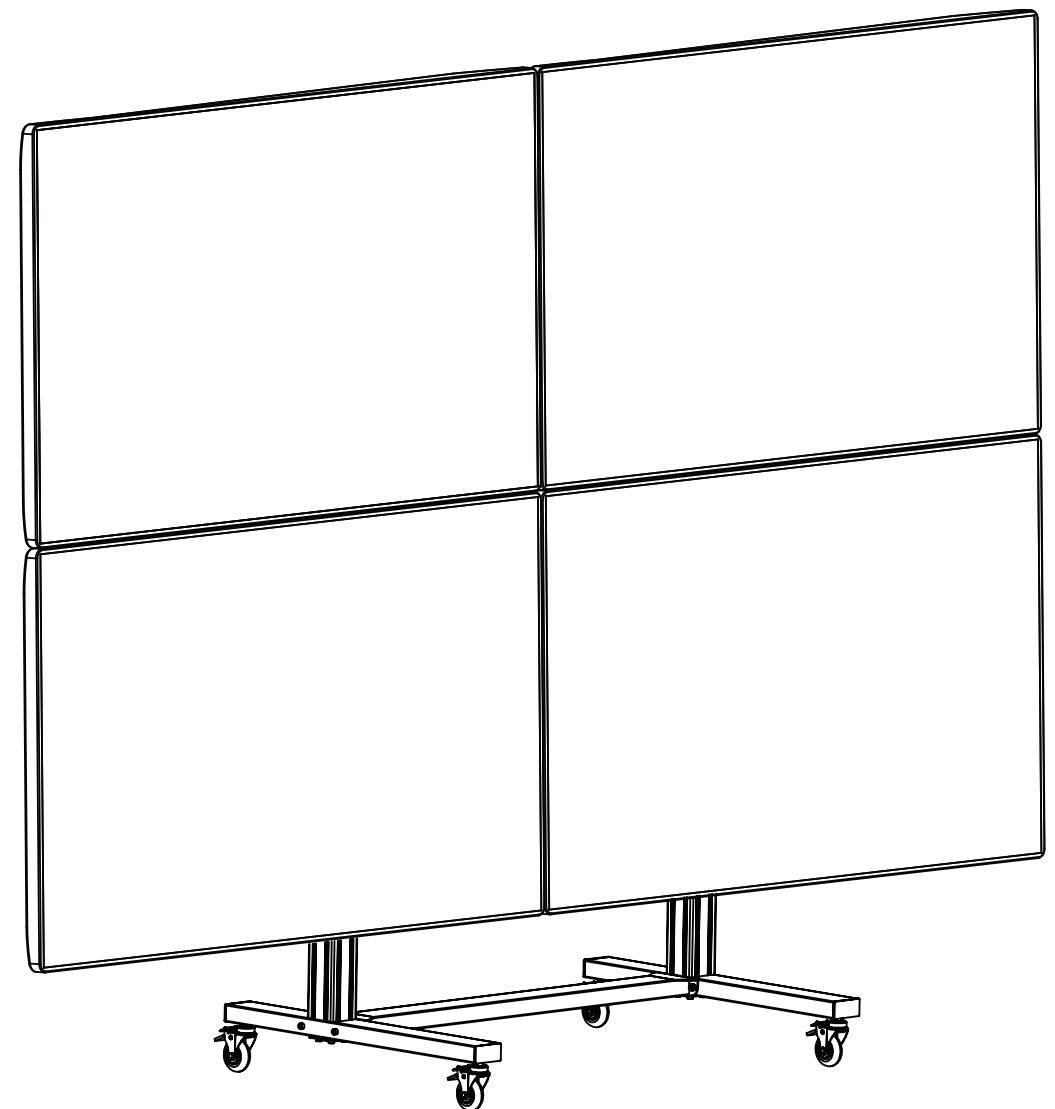
Multi-functional Professional Mobile Stand

TMO-FLS-003

For TV panels:32"-55"(x4)

The Whole Load capacity:400Lbs(181kg)

MAX VESA:600x400mm



⚠ WARNING

- Be sure to read this entire manual thoroughly and you fully understand all the instructions and warning before attempting to begin your installation.
- This product should only be installed by someone who has a basic knowledge of building construction, installation and fully understands these instructions.
- Needing more than three people together to complete the installation.
- Each step when leaving the mounting screws 3mm, easy to adjust back, wait for all the installation and adjustment is completed, then tighten the screws in place.

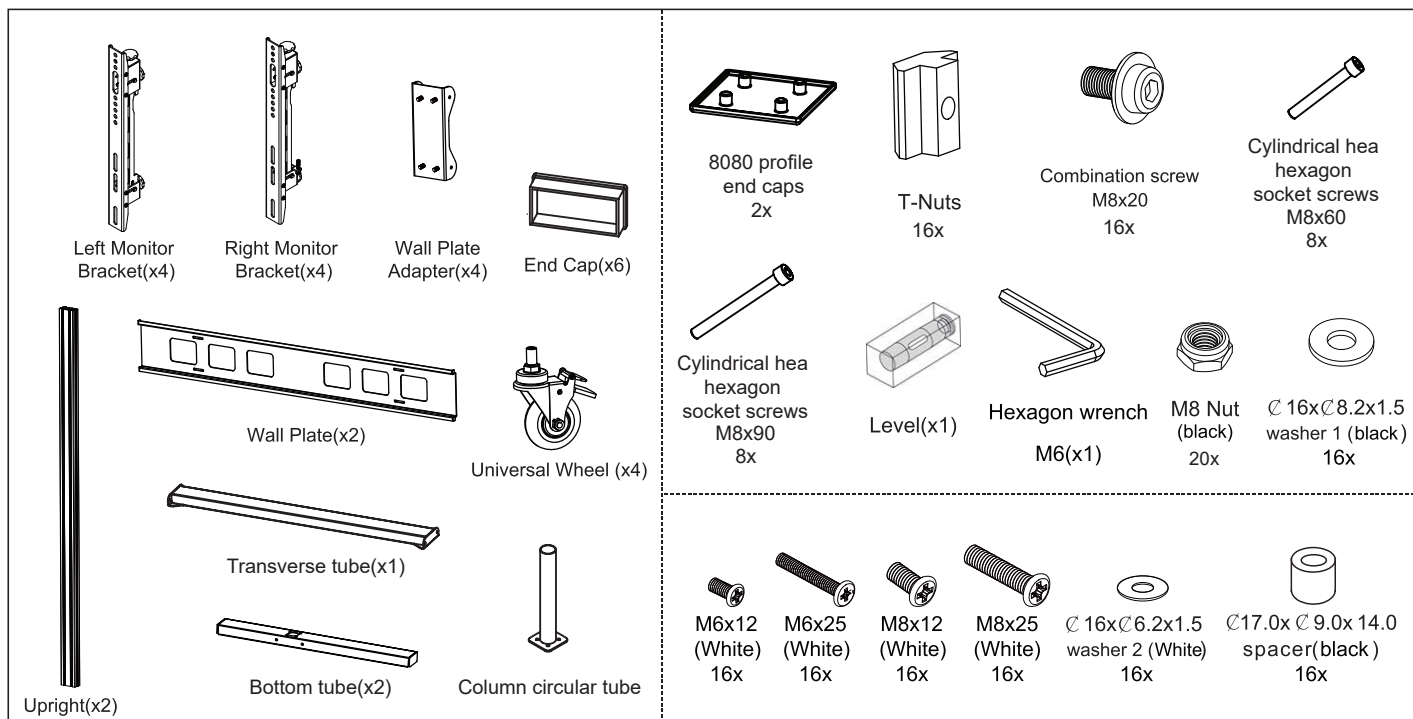
Table of Contents

Parts List	2
Installation of the mount 	3,4
Installation of the Screens & Product fine tuning.....	4

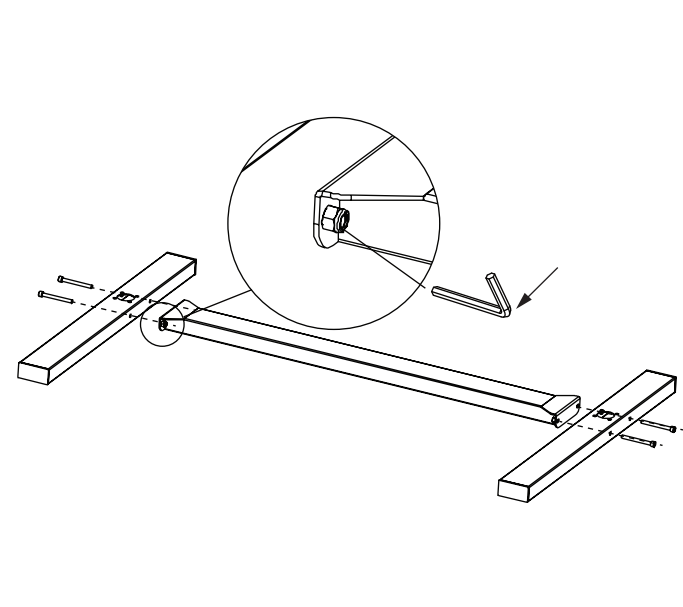
*Before you begin, make sure all parts shown are included with your product.
Parts may appear slightly different than illustrated.*

Parts List

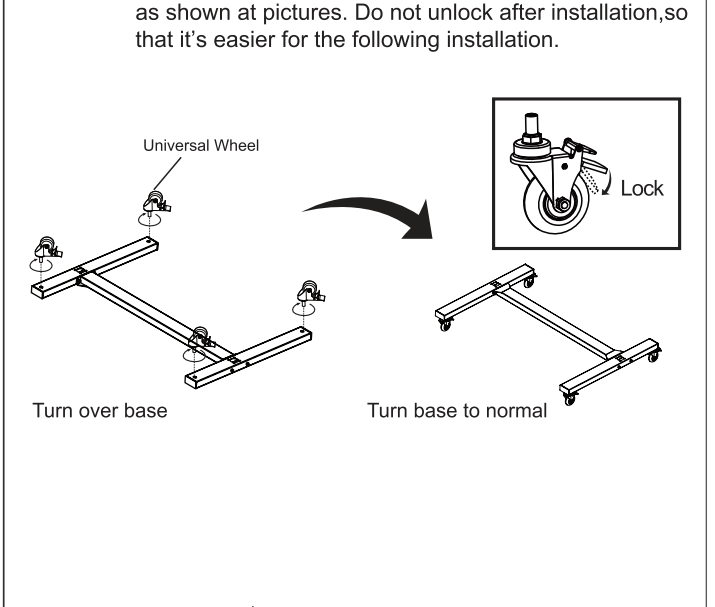
Description					
1	philips pan head screw	16	M6x12	8080 profile end caps	2
2	philips pan head screw	16	M6x25	T-Nuts	16 M8
3	philips pan head screw	16	M8x12	Combination screw	16 M8x20
4	philips pan head screw	16	M8x25	Cylindrical hea hexagon socket screws	8 M8x60
5	washer 2	16	∅16x∅6.2x1.5	Cylindrical hea hexagon socket screws	8 M8x90
6	spacer	16	∅17.0x∅9.0x14.0	Level	1 15x15x40
7				Hexagon wrench	1 M6
8				M8 Nut	20 M8
				Washer 1	16 ∅16x∅8.2x1.5



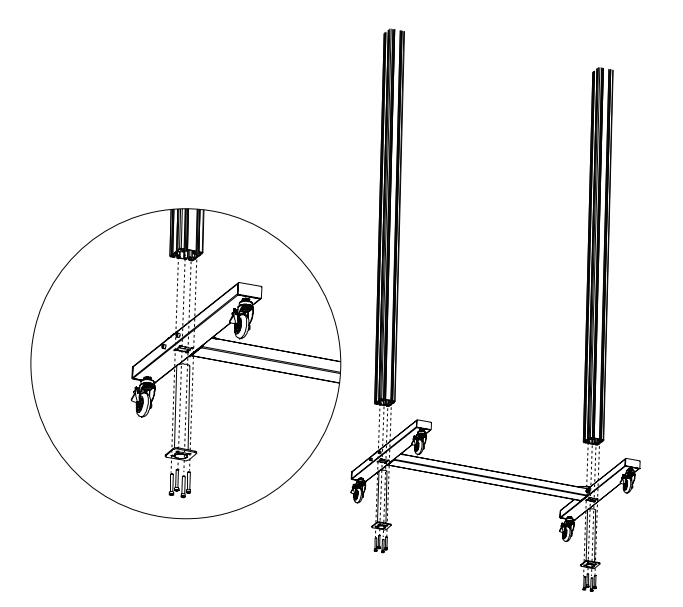
Step1 Connect transverse tube and bottom tube using screws and nuts.



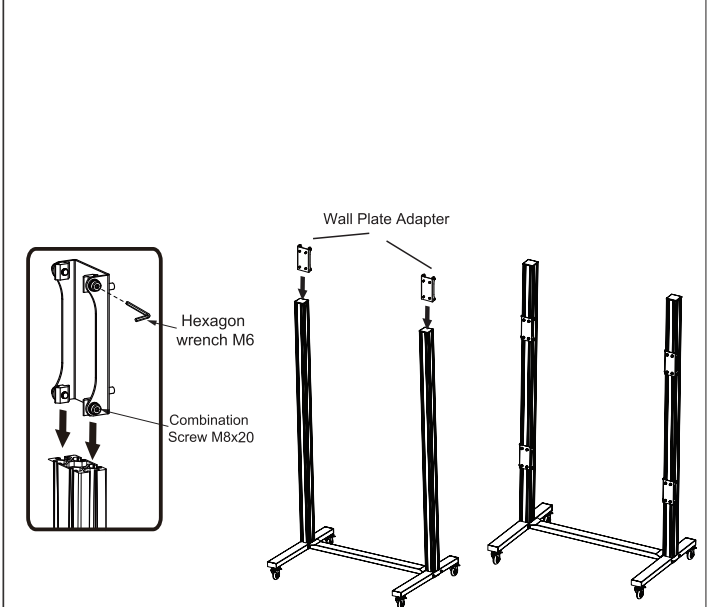
Step2 Before installing the universal wheel, lock the wheel first, then install the 4 wheels according to clockwise direction as shown at pictures. Do not unlock after installation, so that it's easier for the following installation.



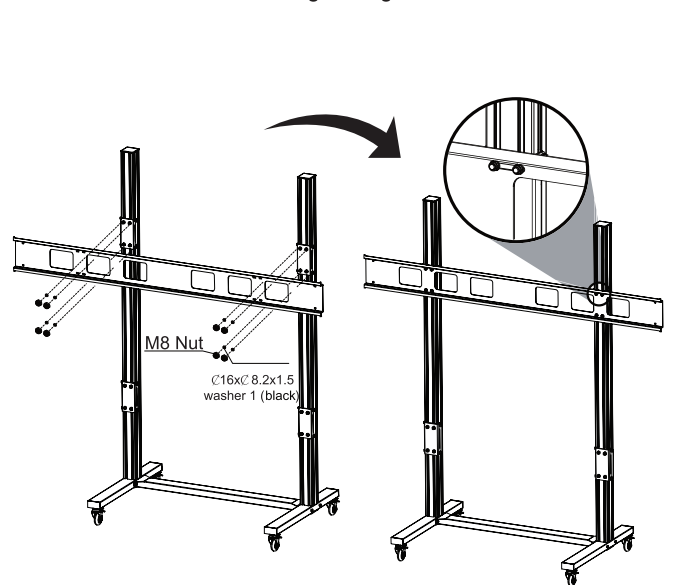
Step3 Use screws to fix upright and column circular tube onto bottom tube.



Step4 Install wall plate adapter.



Step5 Extended panel installation, since the panel is relatively heavy, need two people carrying both ends to maintain a balance when tightening the nuts.



Step6 Repeat steps 5 installation method to install a the second panel.

