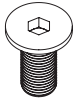


# INSTALLTION INSTRUCTION

TMO-TAB-002

Components:



**A**

Hexagon socket  
countersunk  
head screw  
M5\*16(x4)



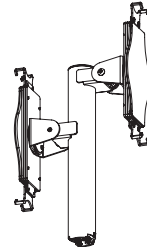
**B**

Hexagon  
wrech  
M2.5(x1)



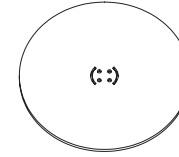
**C**

Hexagon  
wrech  
M3(x1)



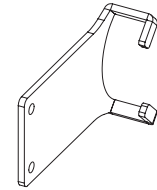
**AA**

Round base  
(x1)



**BB**

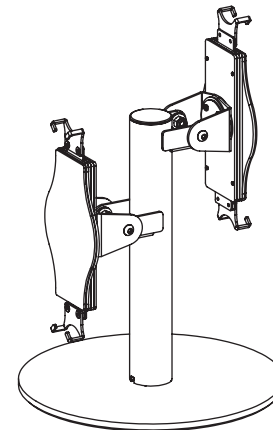
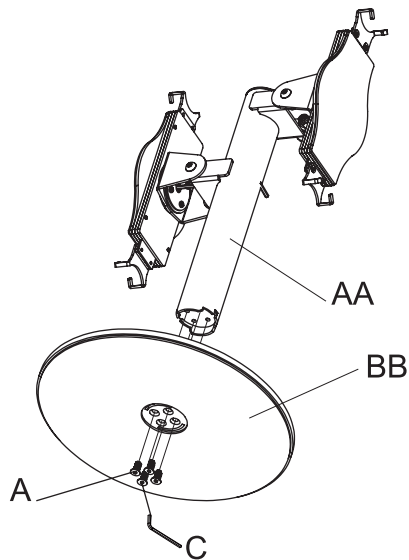
Telescopic stand  
(x1)



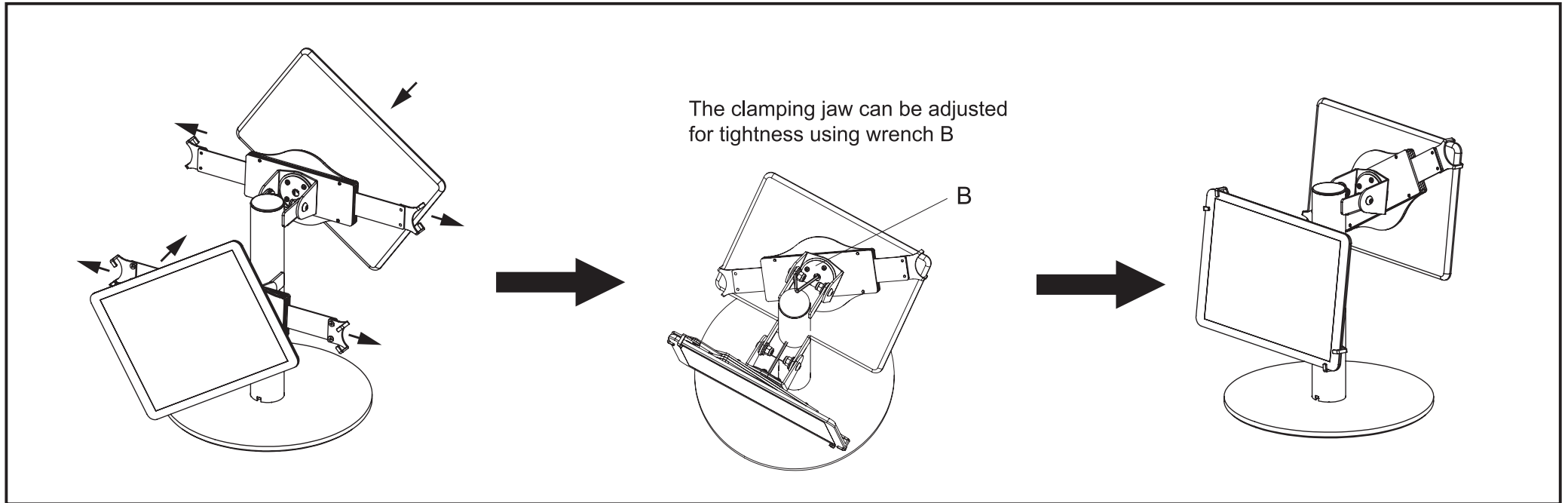
**CC**

Long Claw Plate  
(x4)

**STEP1:** Install the base and column.



## STEP2: Install tablet.



## STEP3: Optional replacement of long claw plate.

